



**PFAFF**

# DENIM BELT

Belt size: 70 cm (28")

**You need:**

- 60 cm x 1.40 m (24" x 55") blue denim fabric
- 30 cm x 30 cm (12" x 12") turquoise silk fabric
- 50 cm (20") interfacing
- Blue sewing thread
- Machine embroidery thread, 40 wt., in white, turquoise, and green
- Light weight bobbin thread
- 12 silver metal eyelets, Ø 5 mm (3/16")
- 2 silver metal eyelets, Ø 8 mm (5/16")
- Pliers to attach eyelets
- Fabric marker
- Embroidery stabilizer
- Temporary spray glue
- Tube turning tool

## 1. Paper pattern

- You'll find the full-sized pattern, including seam allowances, on the pattern sheet, page 3.
- Our belt is 70 cm (28") long. If you need a different size, you can lengthen or shorten the pattern at the fold line.

## 2. Cutting

**Denim:**

Front belt piece, cut 4, back with interfacing

Back belt piece, cut 2 on fold, back with interfacing

Facing rectangle, cut 10

Bias strips for ties, cut 2, each 60 cm x 3 cm (24" x 1 1/4")

Bias strip for loops, cut 1, 30 cm x 2.5 cm (12" x 1")

**Silk fabric:**

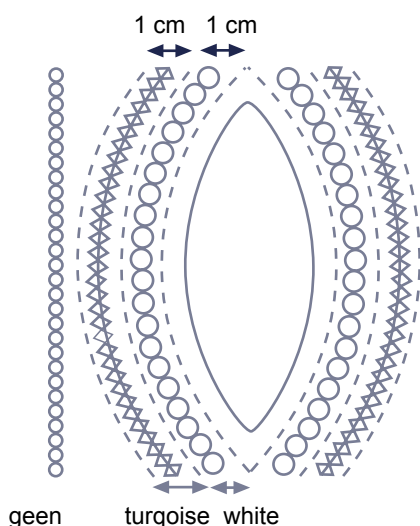
Backing rectangles, cut 10, back with interfacing  
Measurements include 1 cm (3/8") wide seam allowances.

### 3. Sewing

- Use the fabric marker to mark attachment lines for the ellipses on the right sides of the belt pieces.
- Draw the sewing lines for the ellipses on the wrong side of the facing pieces.
- Pin the facing pieces to the belt pieces as marked, right sides together.
- Sew along marked attachment lines for each ellipse with small straight stitch (1.5 mm long). Trim away the inside ellipse close to the seam line. Turn the facing to the wrong side of the belt. Press seamed edges.
- Spray the edges of the facing pieces on the wrong side of the belt with temporary glue. Adhere the silk backing pieces behind the cut-out ellipses.

**Embellishing:**

- Back belt piece with embroidery stabilizer. Topstitch the denim, parallel to the seamed edges of the ellipses, using decorative stitches of your choice. Stitch rows of the small circle stitch (Ø 4 mm) vertically between the ellipses.
- We used the following stitches from the stitch program of Pfaff's performance 2054:  
No. 2, triple straight stitch (3.5 mm long)  
No. 255, circle stitch (Ø 6 mm or 4 mm)  
No. 135, hemstitch, (6 mm wide/ 3 mm long). For stitch placement, see illustration below:



- Remove embroidery stabilizer.
- Lay each embroidered belt piece on a corresponding piece with no embroidery, right sides facing. Stitch together along all edges, leaving an opening for turning.
- Trim seam allowances, trimming corners of allowances diagonally. Turn belt sections right side out.
- Press seamed edges flat. Topstitch around all edges with straight stitch, using blue sewing thread
- Insert the eyelets as marked.

**TIP:**

Special pliers are available for inserting eyelets!

**Loops:**

- Fold the shorter bias strip in half lengthwise, right side facing in. Stitch 7 mm (1/4") from the fold edge.
- Tie-off beginning and end of seam securely with backstitching. Trim seam allowances. Use turning tool to turn strip right side out.
- From the resulting band cut 6 pieces, each 3.5 cm (1 1/2") long.
- Lay the belt fronts next to the belt back so that the straight edges meet. Pull each band piece through two adjacent eyelets.
- On inside of belt, sew ends of each band piece together to form a ring.

**Bands:**

- Fold each band piece in half lengthwise, right side facing in. Stitch one presser foot width from the fold edge.
- Tie-off beginnings and ends of seams securely. Use the turning tool to turn the bands right side out.
- Topstitch close to long edges of each band.
- Knot the ends of each band.

HM Bruch Fll • CB (Center Back),  
 str. grain • ligne milieu dos pliure  
 du tissu sens du droit-fil • Centro  
 dietro Margine piegato • Drittofillo  
 • mitt bak viking trädriktning  
 • midden vouwlijn draadriktning

Beleg • Underliggstoff • facing,  
 backing fabric • parementure  
 tissu de fond • Rinfond, 2°  
 strato di stoffa • inffooking  
 underliggstyg • beleg  
 onderste stoflaag

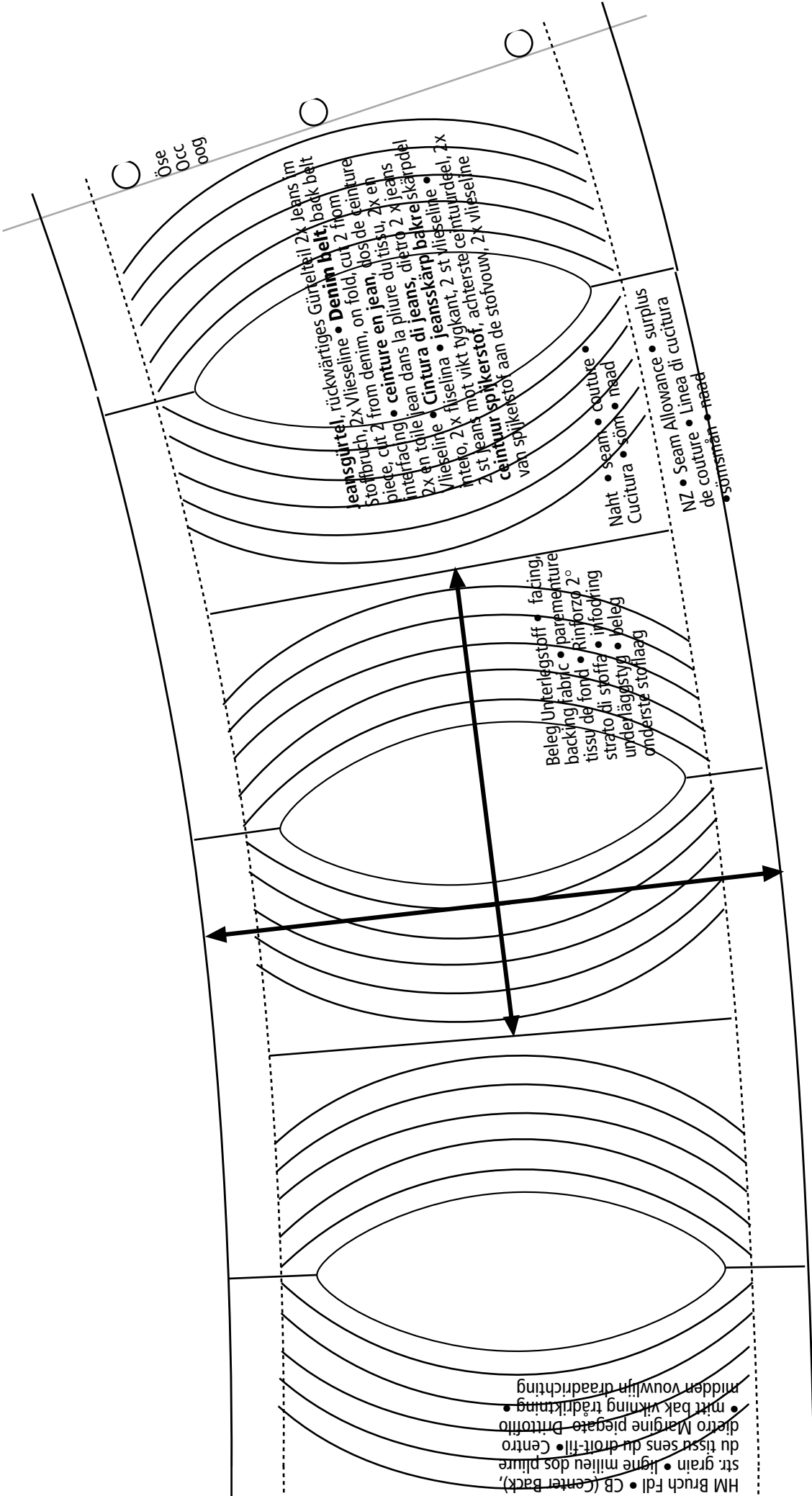
jeansgürtel, rückwärtiges Gürtelteil 2x jeans im  
 Stoffbruch, 2x Vlieseline • **Denim belt**, back belt  
 piece, cut 2 from denim, on fold, cut 2 from  
 interfacing • **ceinture en jean**, dos de ceinture  
 2x en toile jean dans la pliure du tissu, 2x en  
 Vlieseline • **Cintura di jeans**, dietro 2x jeans  
 Intelo, 2x fliselina • **Jeanskärp**, bakreiskärpdel  
 2 st jeans, mbt vikt tygkant, 2 st vlieseline  
**ceintuur spijkerstof**, achterste ceintuurdeel, 2x  
 van spijkerstof aan de stofvoam, 2x vlieseline

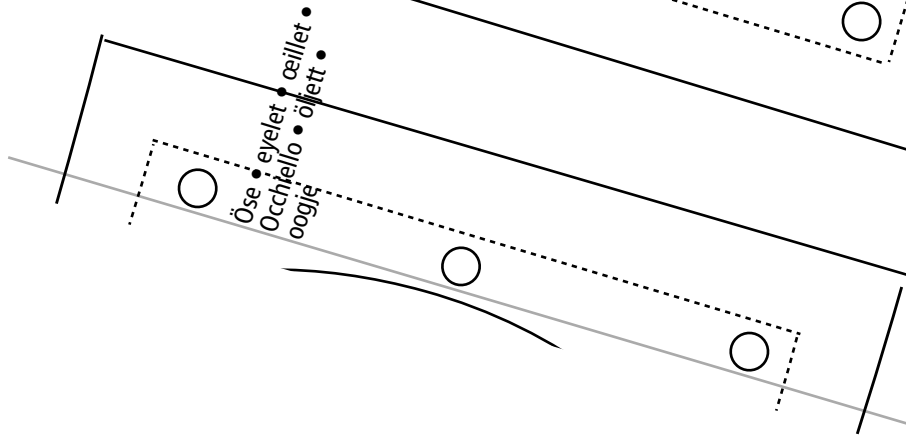
Naht • seam • couture  
 Cucitura • sòm • head

NZ • Seam Allowance • surplus  
 de couture • Linea di cucitura

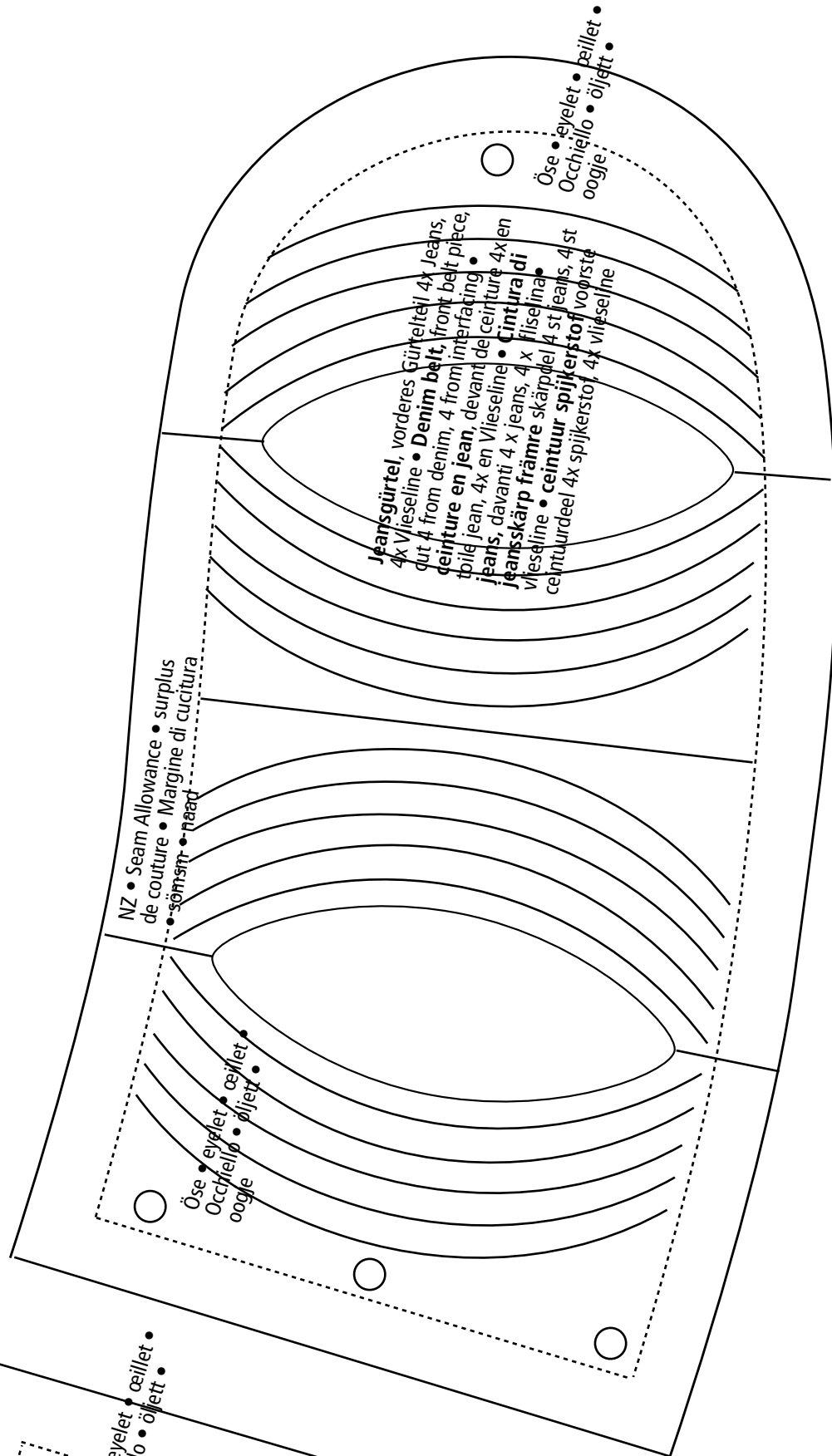
• sömsmått • head

Öse  
 Occ  
 oog





Öse • eyelet • ceillet •  
 Occhiello • öljett •  
 oogje



NZ • Seam Allowance • surplus  
 de couture • Margine di cucitura  
 • sömsm • naad

**Jeansgürtel**, vorderes Gürtelteil 4x Jeans,  
 4x Vlieseline • **Denim belt**, front belt piece,  
 cut 4 from denim, 4 from interfacing •  
**ceinture en jean**, devant de ceinture 4x en  
 toile jean, 4x en Vlieseline • **Cintura di**  
**jeans**, davanti 4 x jeans, 4 x fliselina  
**Jeansskärp främre** skärpdel 4 st jeans, 4st  
 Vlieseline • **ceintuur spijkerstof** voorste  
 ceintuurdeel 4x spijkerstof, 4x Vlieseline

Öse • eyelet • ceillet •  
 Occhiello • öljett •  
 oogje